

CUSTOM SHADE PROTOCOL CHECKLIST

Custom Shade Picture Protocol: Photo with white balance must be taken in RAW format.

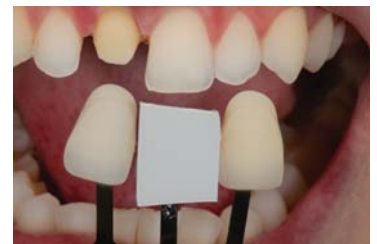
1. Closeup photo with closest shade tab and second closest shade tab held with gingival edge of shade tab to incisal edge of tooth taking shade from. Cutout square white balance grey card on shade tab without polarized lens (ideal exposure histogram grouping toward center, or slightly left of center).

All remaining photos taken with polarized lens



2. Same photo as Step #1, but with polarized lens.

3. Polarized closeup with white balance card held directly under tooth taken the shade from. Or if doing #8 & #9, held with center line lined up with midline (if using E-Lab or Matisse grey card).



4. Close up (as close as you can get with tooth still in focus) of tooth with flash stepped down, 1 step underexposed. For example, if flash is set at 1/2 with ideal exposure, then step down to 1/4.

5. Same as Step 4, just another step down IG: from 1/4 to 1/8.

6. Same as Step 5, just another step down IG: from 1/8 to 1/16.



Please provide me with percentage of White Balance card used.

An additional fee for custom shade protocol applies; Please contact DDA for more details.

These photos are only for shade purposes. See Dynamic Dental Arts Cosmetic Checklist (Downloadable from www.DynamicDentalArts.com) for required photos on cosmetic cases.



p 425.971.1634

e DanHenryDDA@gmail.com

w dynamicdentalarts.com